

# DICTO

## Architecture Conformance Checking

Andrea Caracciolo

<http://scg.unibe.ch/dicto>

*u<sup>b</sup>*

---

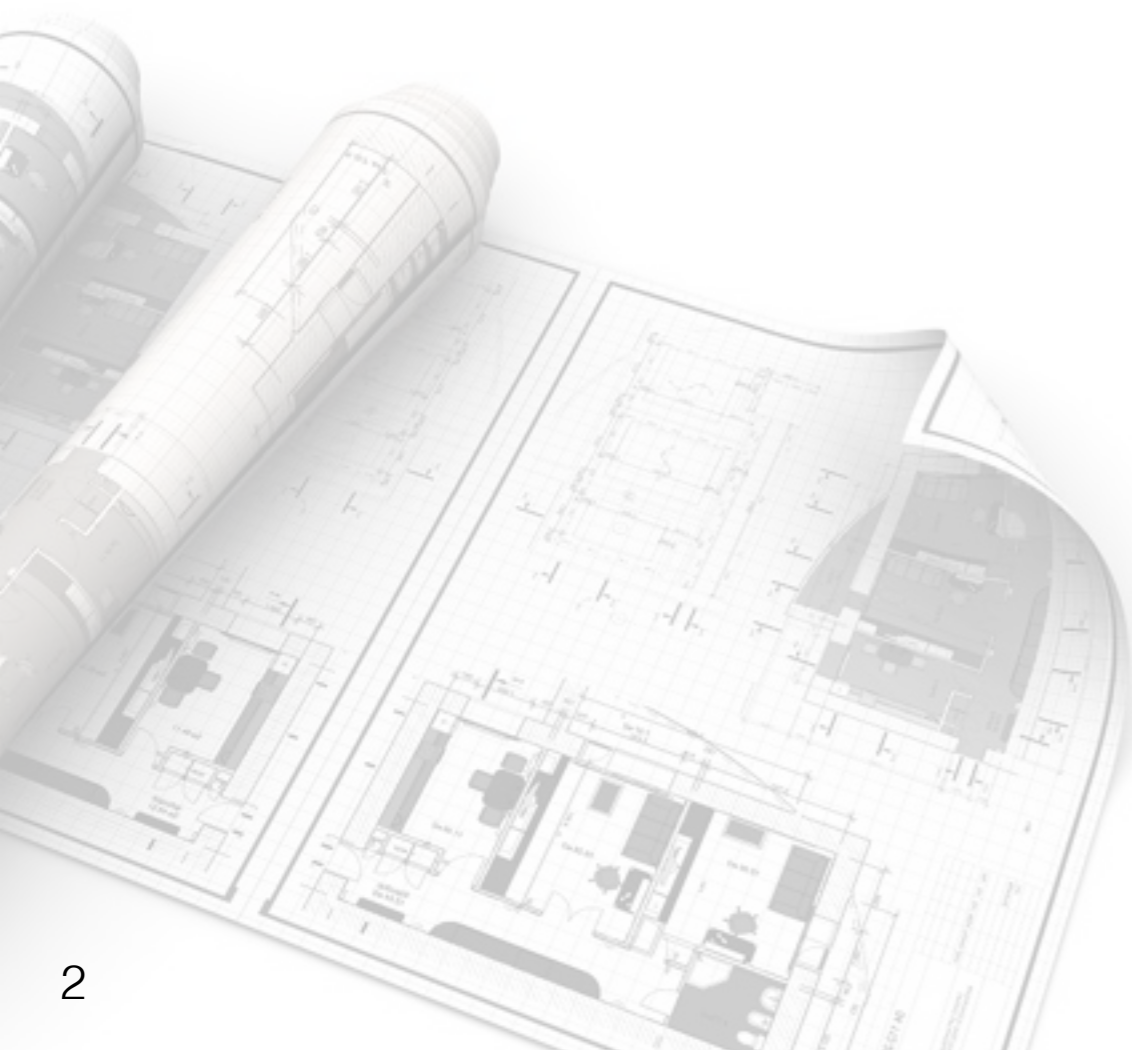
b  
**UNIVERSITÄT  
BERN**

# Architecture Compliance

**Design**

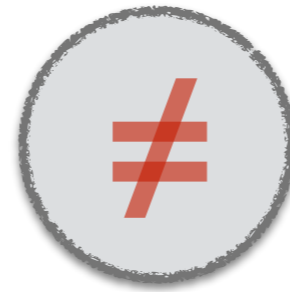


**Code**

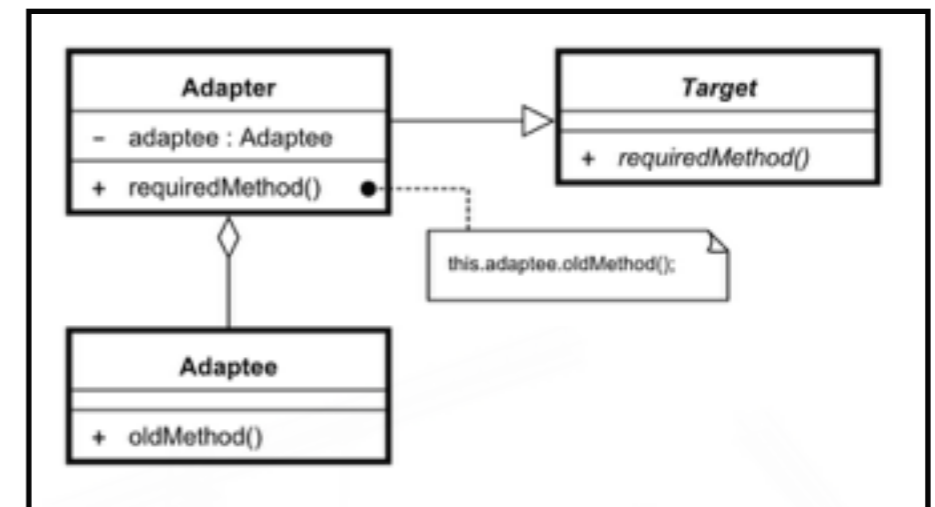
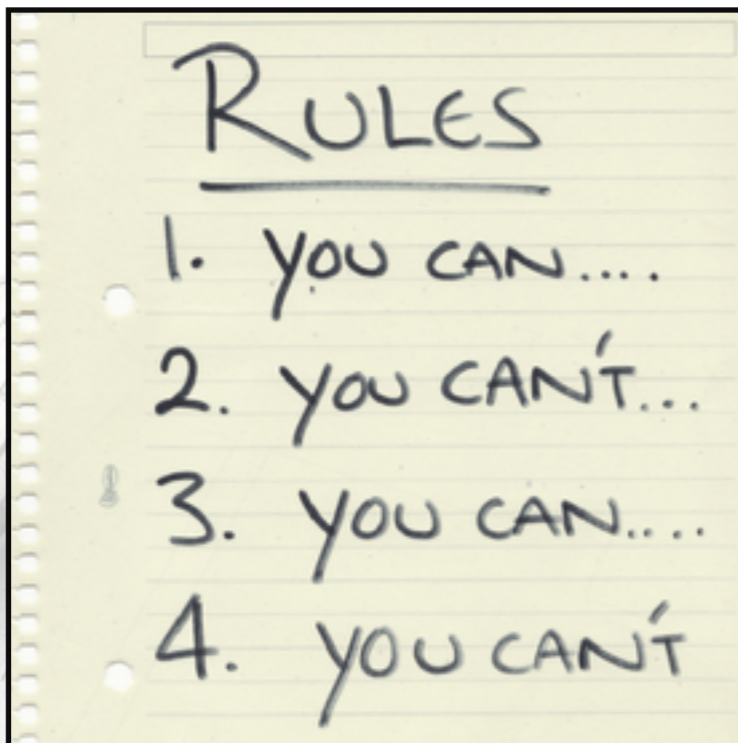


# Architecture Compliance

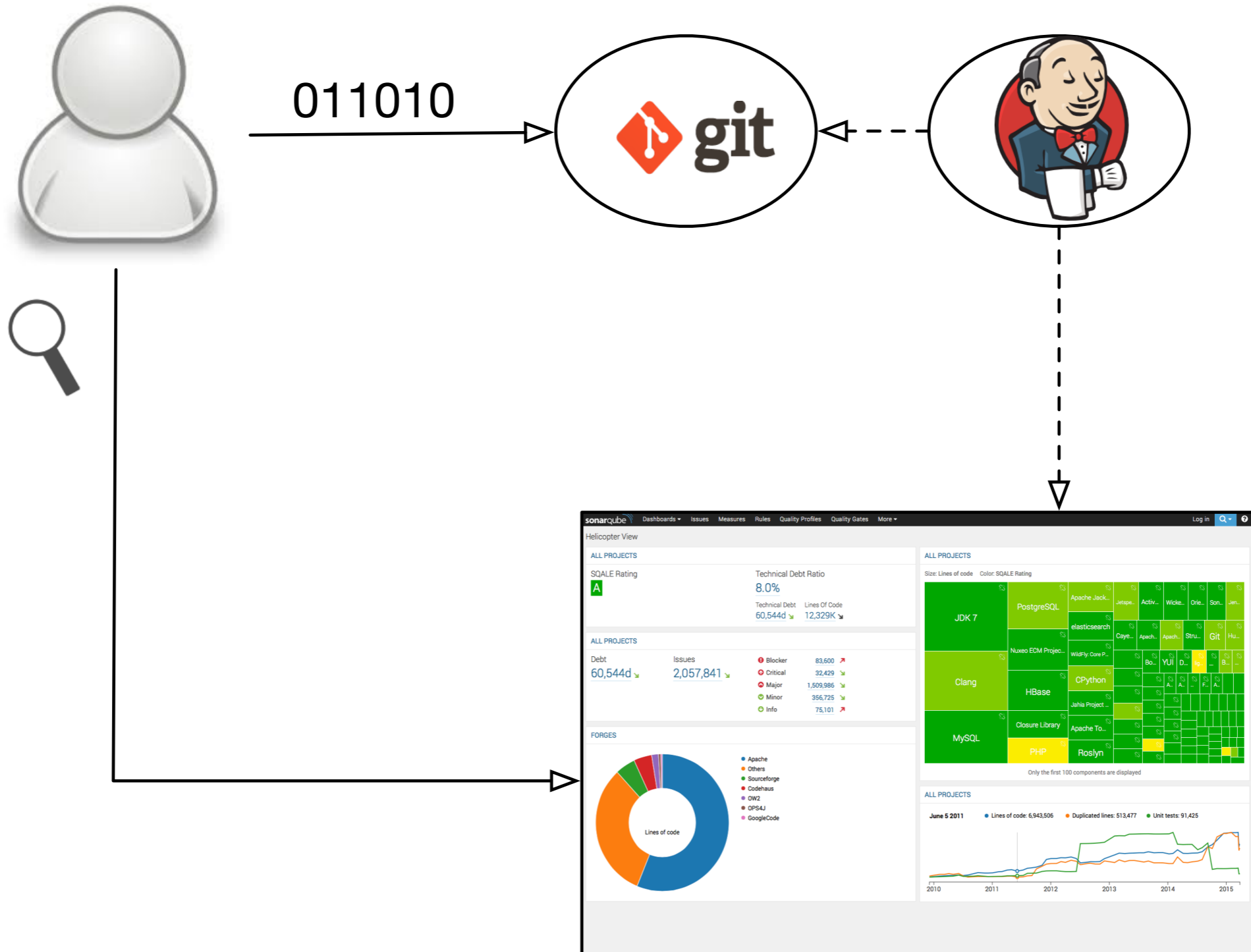
**Design**



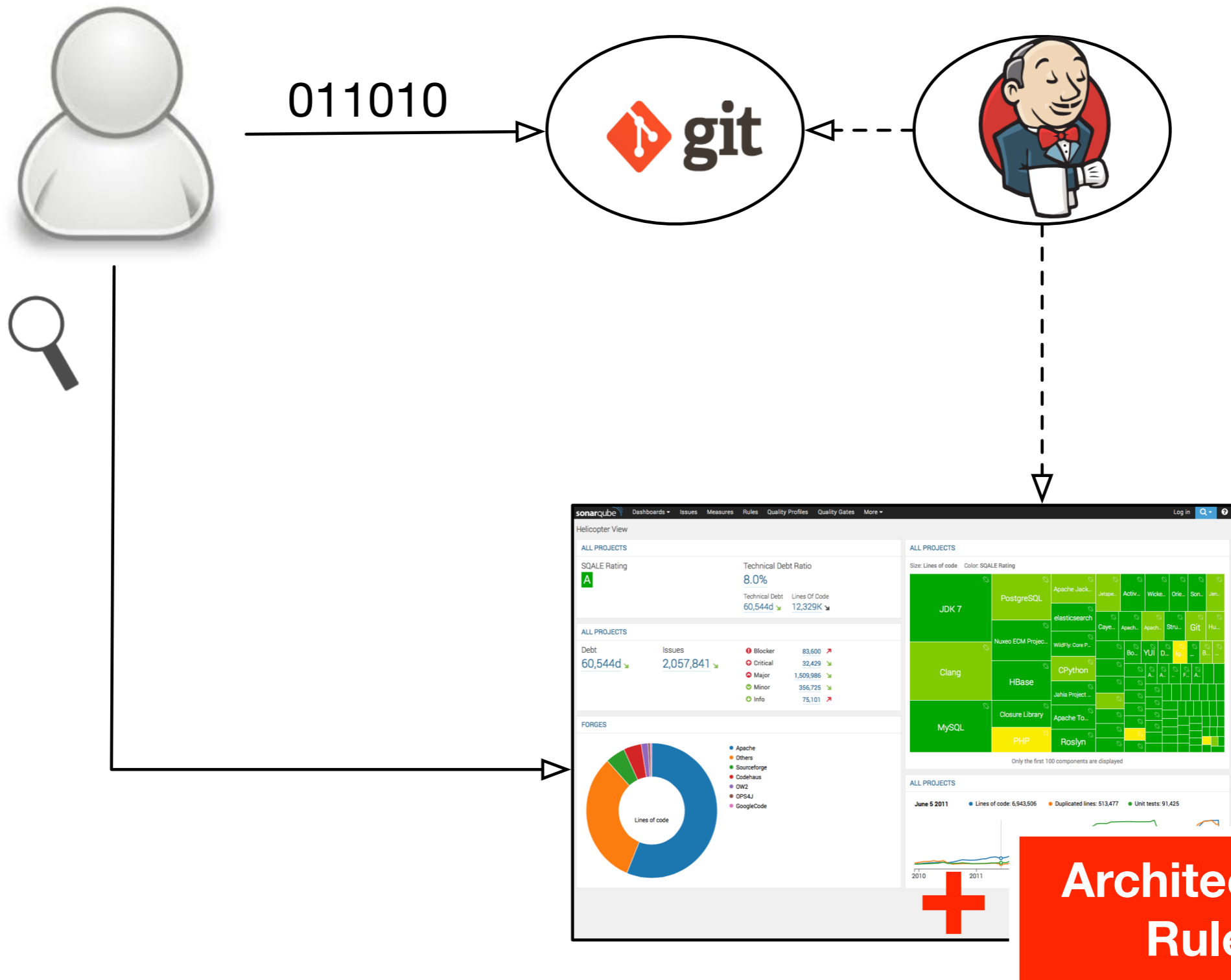
**Code**



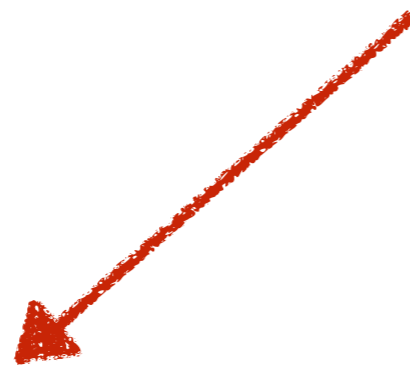
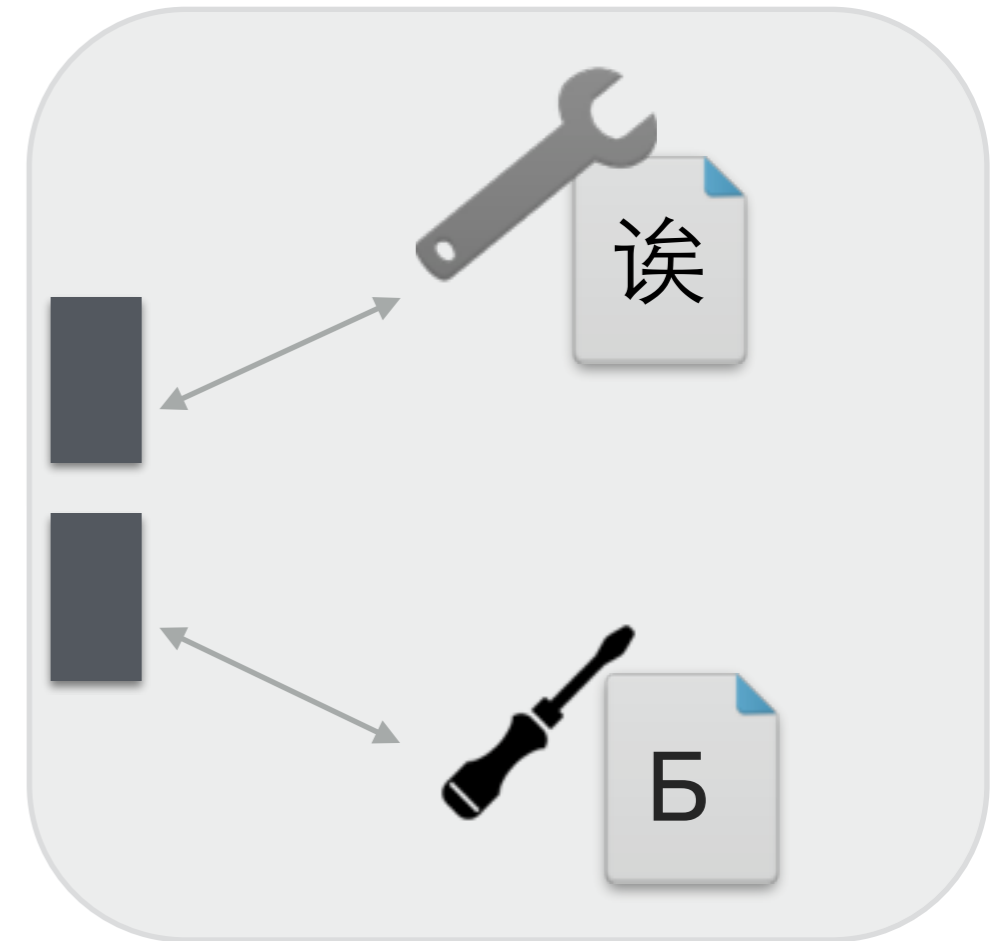
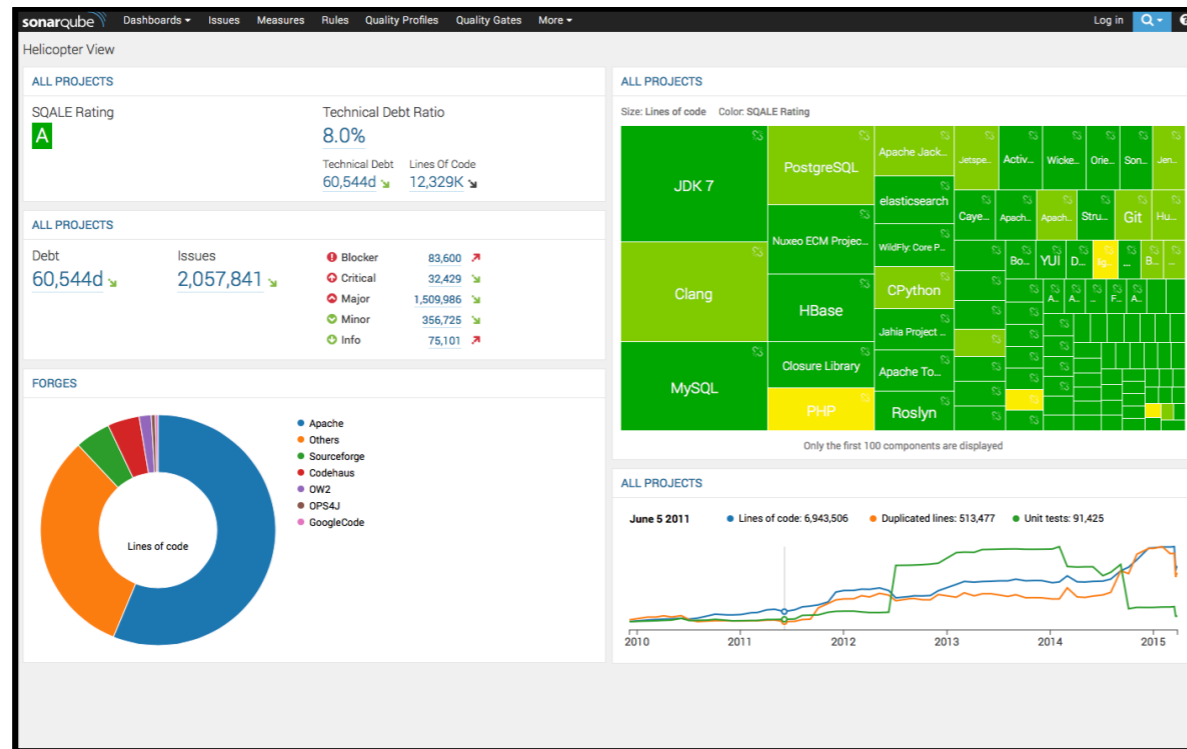
# Quality Monitoring



# Quality Monitoring

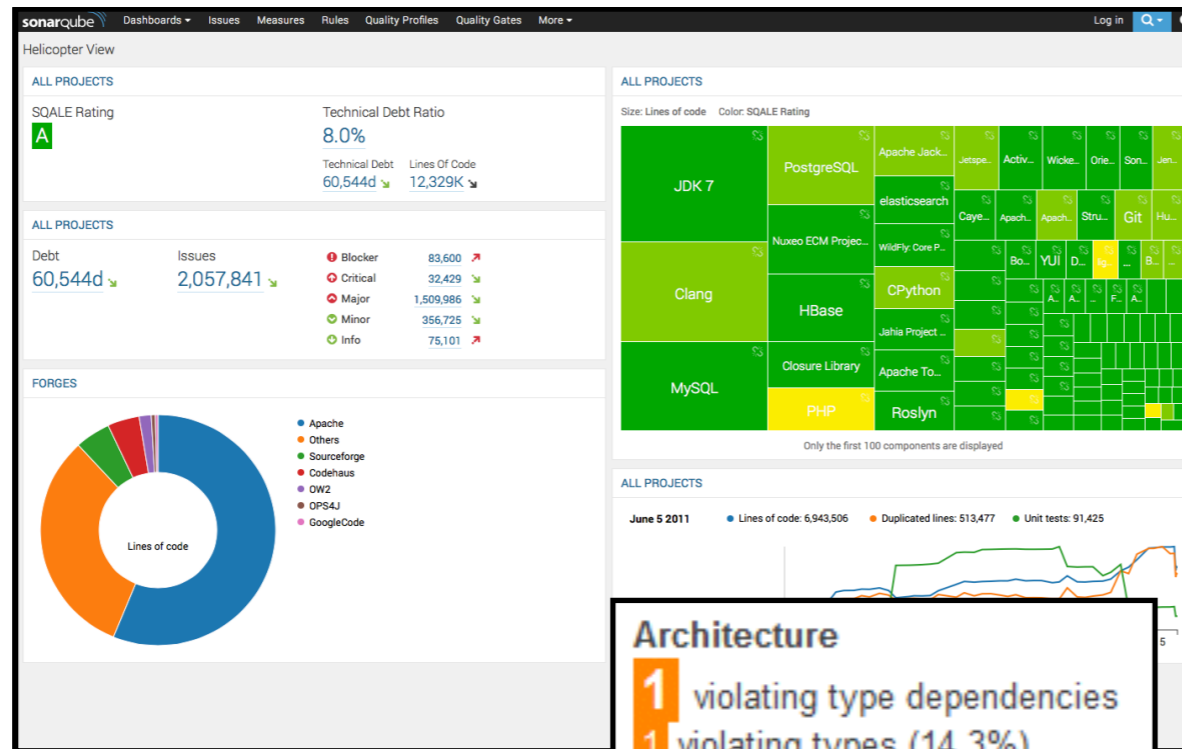


# Quality Monitoring





# Quality Monitoring

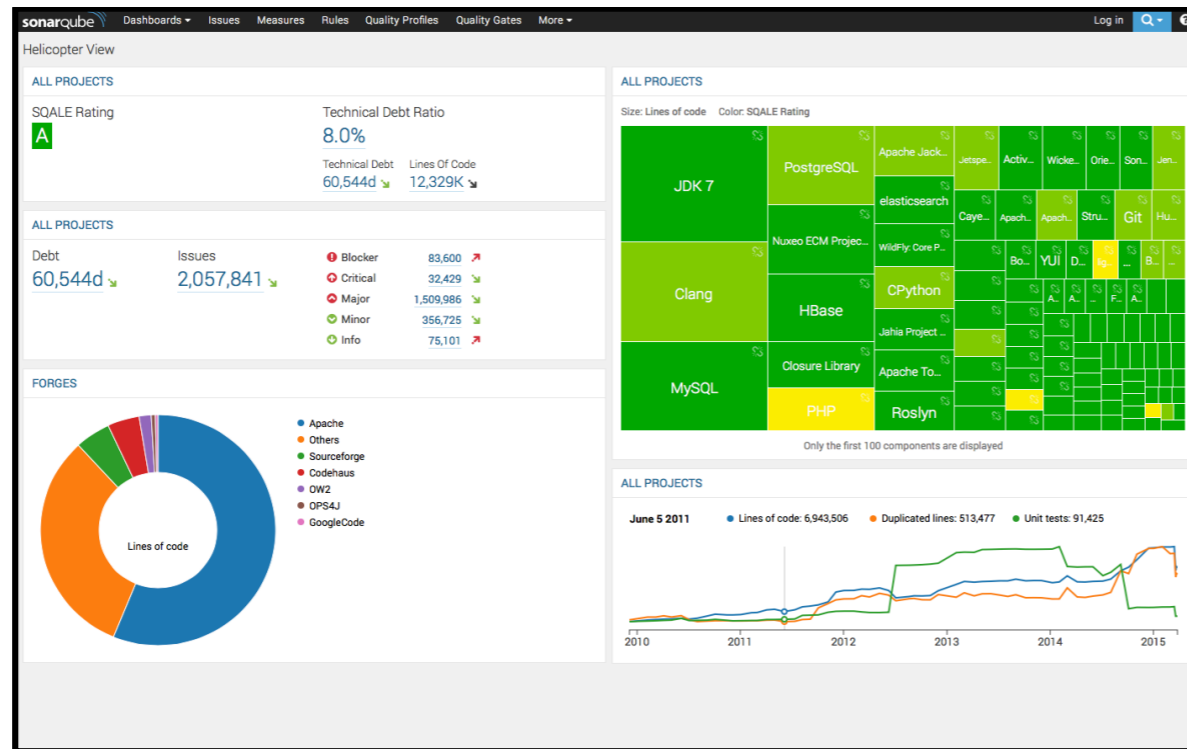


**Architecture**

- 1 violating type dependencies
- 1 violating types (14.3%)
- 2 violating references
- 2 ignored violations
- 1 unassigned types (14.3%)



# Quality Monitoring



## Rules

Persistence cannot **depend on Service**

**Service** must have annotation "`@Service`"

System cannot **contain cycles**





# Rule examples



## **Structural**

*Controller, Model, Dao* must **be layered**

*CoreExceptions* must **be caught**

*PojoMethods* can only **be named** "get\*", "set\*"

*DataBean* must **have attribute** "destroy-method"

only *TestPackage* can **contain dead methods**

*Model* cannot **contain code clones; contain cycles**

## **Behavioural**

*ModelClasses* cannot **lead to deadlock**

*PriceAPI* must **have content** "\*CHF"; **status code** "200"

*CustAPI* must **have latency** < 100 ms

*CustAPI* must **handle load from 30 users**

# Rule examples



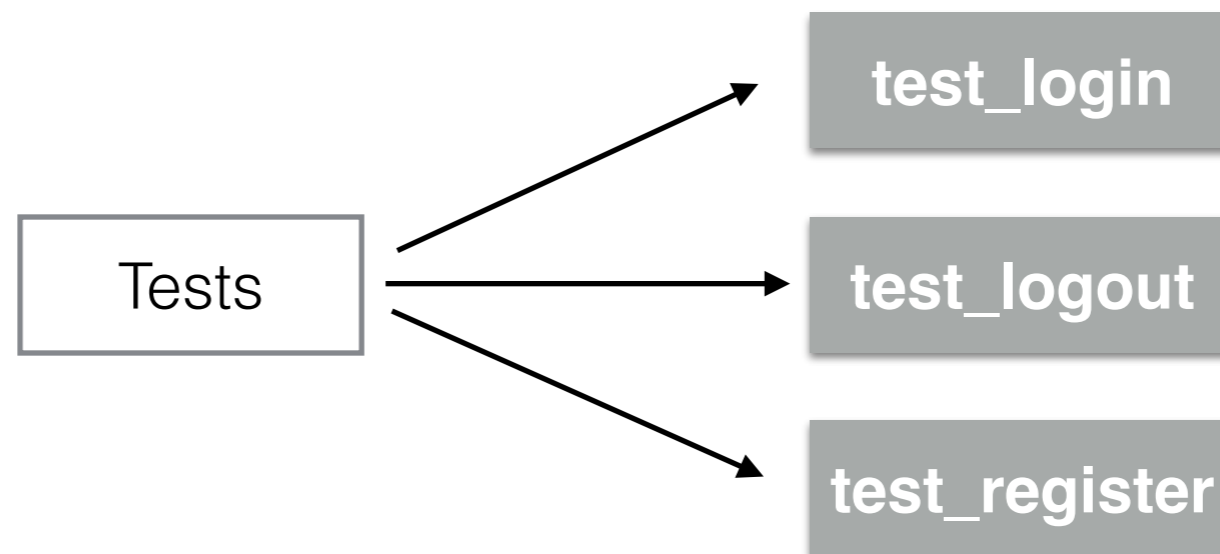
## Entity Definition

Tests = Class with **name**:`"*test_*`

*PojoMethods* = Method with **containingClass**:`""*.pojos.*"`

*DeprecatedMethods* = Method with **annotation**:`"@Deprecated"`

*JUnitSetup* = Method with **annotation**:`"@Before"`, **name**:`"setUp"`





project A

50K LOC

**Persistence** = Package with name: `”**.persistence.**"`

**Service** = Class with superClass: `"*.IService"`

**ImplClasses** = Class with name: `"*Impl"`

**Persistence cannot depend on Service**

**ImplClasses must have annotation "@XXService"**

**System cannot contain cycles**



# project A

analysis: 30 sec

**Persistence** = Package with name: `**.*.persistence.**`

**Service** = Class with superClass: `*.*.IService`

**ImplClasses** = Class with name: `*.*.Impl`

**14 Persistence cannot depend on Service**

**15 ImplClasses must have annotation "@XXService"**

**19 System cannot contain cycles**



# project A

**Persistence** = Package with name: `”**.persistence.**”`

`name!:”**.service.**”`

**Service** = Class with superClass: `”*.IService”`

**ImplClasses** = Class with name: `”*Impl”`

14

4

**Persistence cannot depend on Service**

**ImplClasses must have annotation “@XXService”**

**System cannot contain cycles**



# project A

**Persistence** = Package with name: `"""**.persistence.**"""`,  
name!: `"""**.service.**"""`

**Service** = Class with superClass: `"/Service"`

**Impl** = Class with name: `"/Impl"`

**Persistence cannot depend on Service**

16

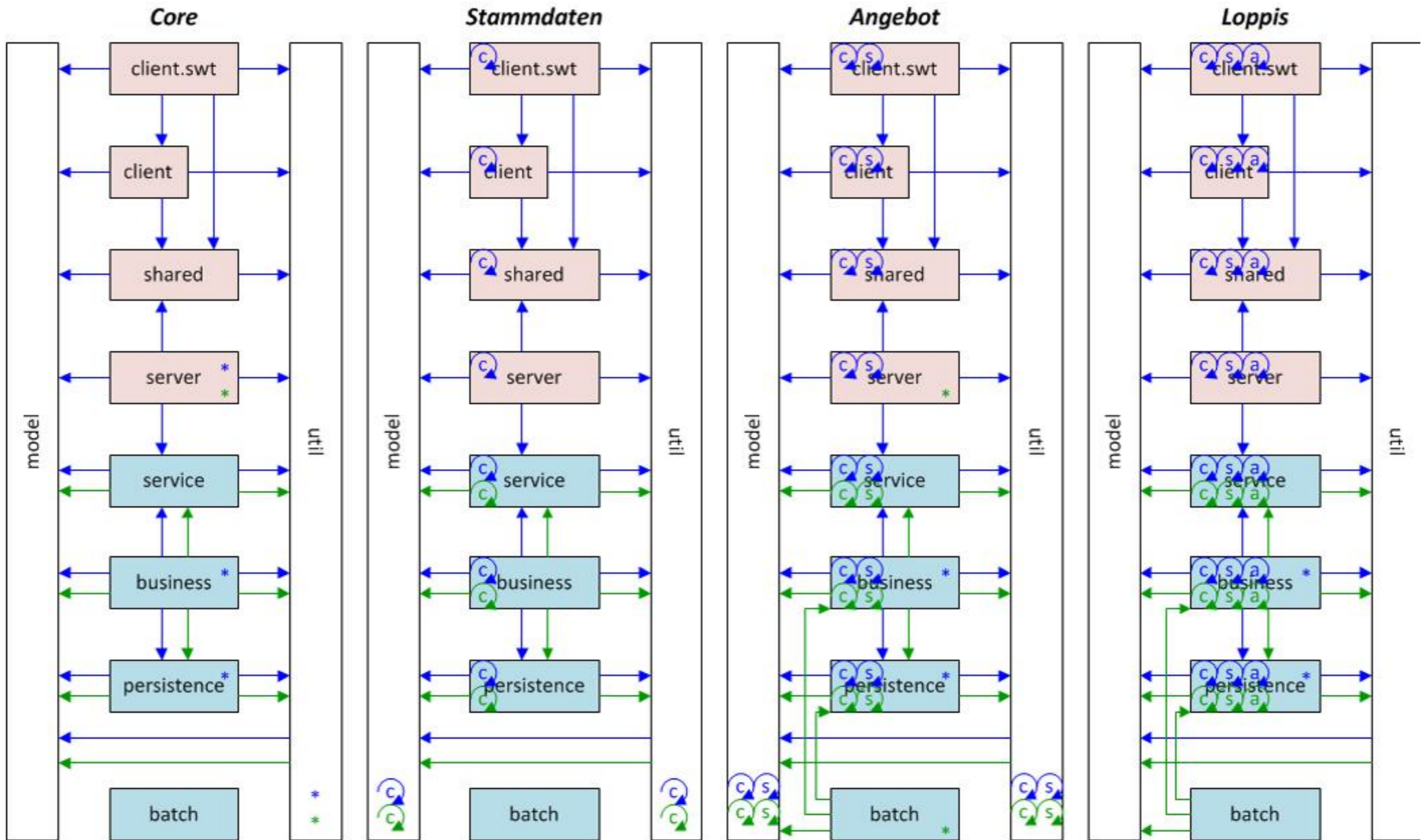
**only ImplClasses can have annotation "@XXService"**

**System cannot contain cycles**





# project B





# project B

0.5M LOC

CoreProject cannot **depend on** StammdatenProject, AngebotProject, [..]

StammdatenProject cannot **depend on** AngebotProject, BetriebProject, [..]

AngebotProject cannot **depend on** BetriebProject, FosProject, [..]

BetriebProject cannot **depend on** StammdatenProject, FosProject, [..]

LoppisProject cannot **depend on** StammdatenProject, FosProject

ClientScoutSWTPackage cannot **depend on** ServerScoutPackage, ServicePackage, [..]

ClientScoutPackage cannot **depend on** ClientScoutSWTPackage, ServerScoutPackage, [..]

SharedScoutPackage cannot **depend on** ClientScoutSWTPackage, ClientScoutPackage, [..]

ServerScoutPackage cannot **depend on** ClientScoutSWTPackage, ClientScoutPackage, [..]

ServicePackage cannot **depend on** ClientScoutSWTPackage, ClientScoutPackage, [..]

BusinessPackage cannot **depend on** ClientScoutSWTPackage, ClientScoutPackage, [..]

PersistencePackage cannot **depend on** ClientScoutSWTPackage, ClientScoutPackage, [..]

UtilityPackage cannot **depend on** ClientScoutSWTPackage, ClientScoutPackage, [..]

ModelPackage cannot **depend on** ClientScoutSWTPackage, ClientScoutPackage, [..]



# project B

analysis: 8 min

CoreProject cannot depend on StammdatenProject, AngebotProject, [..]

StammdatenProject cannot depend on AngebotProject, BetriebProject, [..]

AngebotProject cannot depend on BetriebProject, FosProject, [..]

**57** BetriebProject cannot depend on StammdatenProject, FosProject, [..]

**136** LoppisProject cannot depend on StammdatenProject, FosProject

ClientScoutSWTPackage cannot depend on ServerScoutPackage, ServicePackage, [..]

**27** ClientScoutPackage cannot depend on ClientScoutSWTPackage, ServerScoutPackage, [..]

SharedScoutPackage cannot depend on ClientScoutSWTPackage, ClientScoutPackage, [..]

ServerScoutPackage cannot depend on ClientScoutSWTPackage, ClientScoutPackage, [..]

**22** ServicePackage cannot depend on ClientScoutSWTPackage, ClientScoutPackage, [..]

**19** BusinessPackage cannot depend on ClientScoutSWTPackage, ClientScoutPackage, [..]

PersistencePackage cannot depend on ClientScoutSWTPackage, ClientScoutPackage, [..]

UtilityPackage cannot depend on ClientScoutSWTPackage, ClientScoutPackage, [..]

**4** ModelPackage cannot depend on ClientScoutSWTPackage, ClientScoutPackage, [..]



# project B

Planned rules:

## **Exceptions**

- classes cannot catch `java.lang.Exception` or `java.lang.RuntimeException`

## **Class Naming**

- interfaces must start with “I”
- persistence classes must end with “PO”

## **Class Hierarchy**

- impl classes must use interfaces parent package

## **Comments**

- comments must start by `TODO [ID]:` or `FIXME [ID]:`

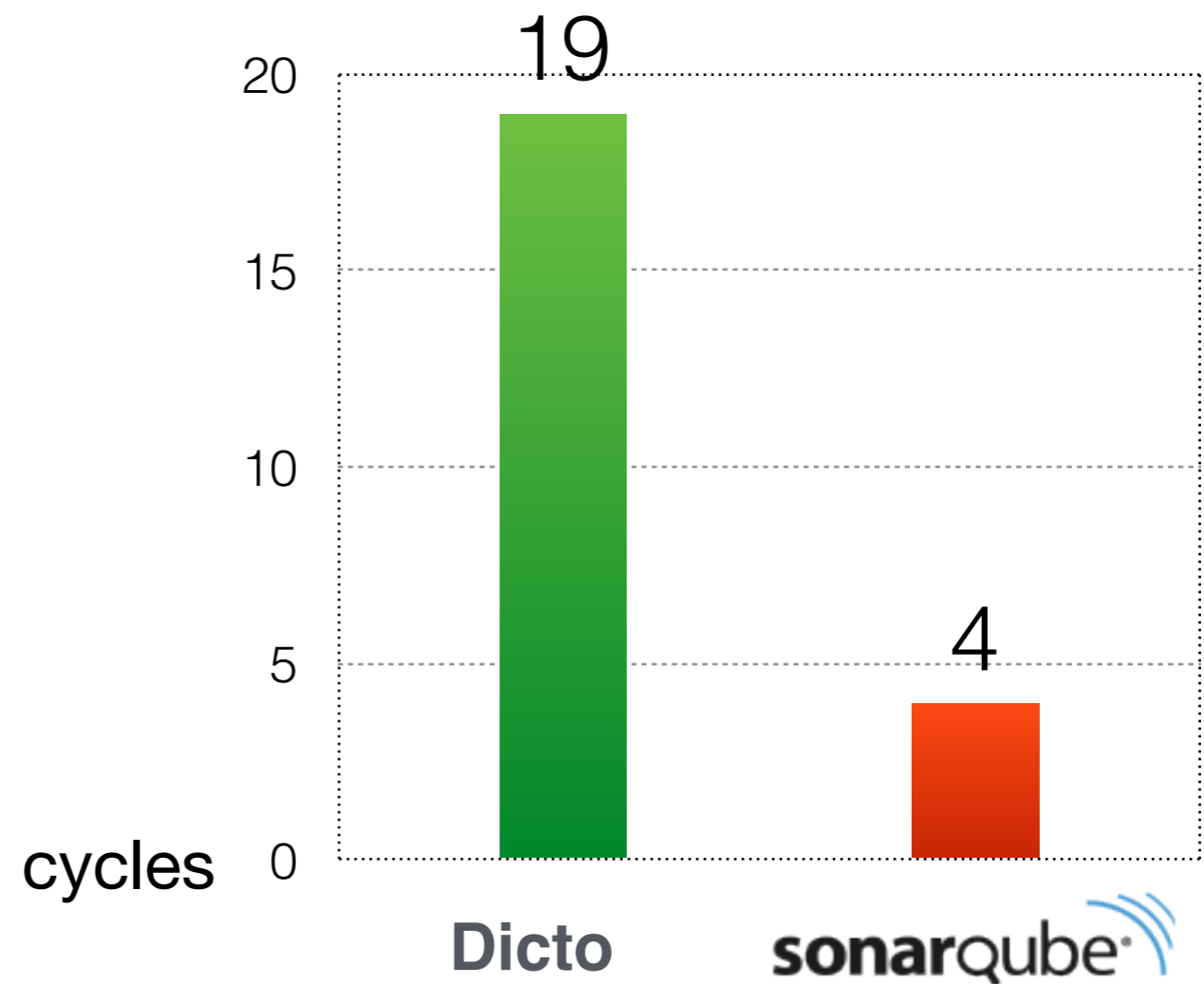
## **Annotations**

- `@Autowired` can only be used on interface attributes



# Dicto vs. SonarQube

**System cannot contain cycles**





# Dicto vs. SonarGraph

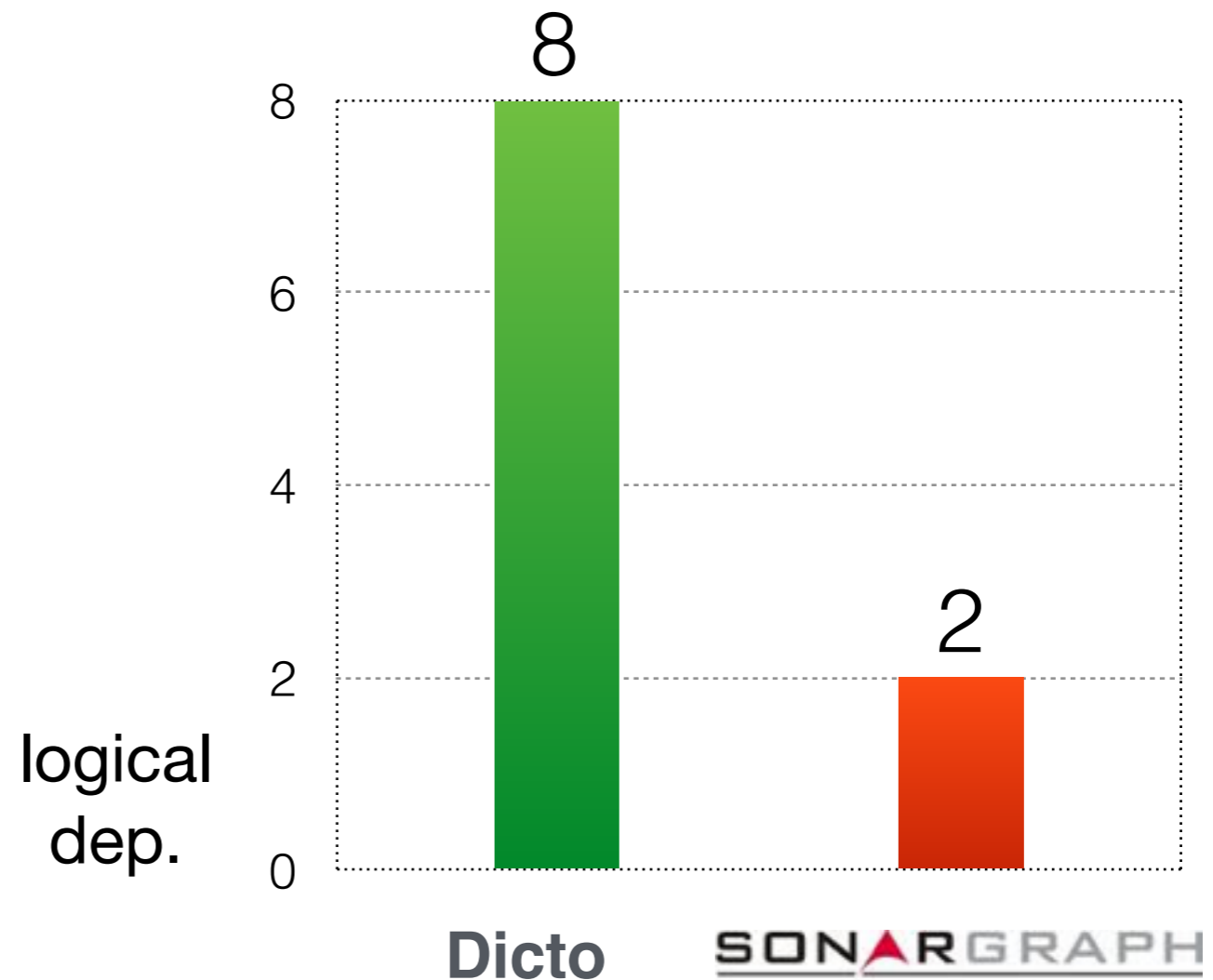
**BetriebProject** cannot depend on **StammdatenProject**, **FosProject**, [..]

**LoppisProject** cannot depend on **StammdatenProject**, **FosProject** [..]

**ClientScoutPackage** cannot depend on **ClientScoutSWTPackage**, **ServerScoutPackage**, [..]

**ServicePackage** cannot depend on **ClientScoutSWTPackage**, **ClientScoutPackage**, [..]

...





`ilExceptionsWithoutTopLevelException` can only **depend on** `ilExceptions`

only `GUIClasses` can **depend on** `ilTemplate`

`IliasCodebase` cannot **use** `triggerError`

`IliasCodebase` cannot **use** `eval`

`IliasCodebase` cannot **use** `exitOrDie`

`IliasCodebase` cannot **use** `SuppressErrors`

only `GUIClasses` can **depend on** `ilLanguage`

`IliasCodebase` cannot **depend on** `SetErrorOrExceptionHandler`

`GUIClasses` cannot **depend on** `ilDB`

only `GUIClasses` can **depend on** `ilTabs`

**7** **ilExceptionsWithoutTopLevelException** can only depend on **ilExceptions**

**101** only **GUIClasses** can depend on **ilTemplate**

**6** **IliasCodebase** cannot use **triggerError**

**3** **IliasCodebase** cannot use **eval**

**227** **IliasCodebase** cannot use **exitOrDie**

**203** **IliasCodebase** cannot use **SuppressErrors**

**316** only **GUIClasses** can depend on **ilLanguage**

**4** **IliasCodebase** cannot depend on **SetErrorOrExceptionHandler**

**45** **GUIClasses** cannot depend on **ilDB**

**5** only **GUIClasses** can depend on **ilTabs**

**7** **ilExceptionsWithoutTopLevelException** can only depend on **ilExceptions**

**101** only **GUIClasses** can depend on **ilTemplate**

**6** **IliasCodebase** cannot use **triggerError**

**3** **IliasCodebase** cannot use **eval**

**227** **IliasCodebase** cannot use **exitOrDie**

**203** **IliasCodebase** cannot use **SuppressErrors**

**316** only **GUIClasses** can depend on **ilLanguage**

**4** **IliasCodebase** cannot depend on **SetErrorOrExceptionHandler**

**45** **GUIClasses** cannot depend on **ilDB**

**5** only **GUIClasses** can depend on **ilTabs**

after 1st week  
-4 violations



# Dicto

Automated Architectural Tests. With emphasis on the Diff. [What's this?](#)

- Repository: <https://github.com/studer-raimann/ILIAS>
- Commit: [ec5aff7e96c6ab3efbfca0e5461d7dd0815b833a](#)
- Compared to Commit: [1d8c0bc57f2f7ac02a0df2a5ab82a541dec10e46](#)

742 Total Violations    468 Added Violations    0 Resolved Violations

only GUIClasses can depend on ilLanguage	+275 ↑
WholelliasCodebase cannot depend on SuppressErrors	+182 ↑
ilExceptionsWithoutTopLevelException can only depend on ilExceptions	+7 ↑
WholelliasCodebase cannot depend on eval	+3 ↑
WholelliasCodebase cannot depend on exitOrDie	+1 ↑

Exit and die are a bad idea in both development and production: In development you have no idea what went wrong and in production the user receives a white page and has no idea what's going on. The implemented exception handling does not work if you use exit or die.

If you want to send a file consider using: Services/FileDelivery.

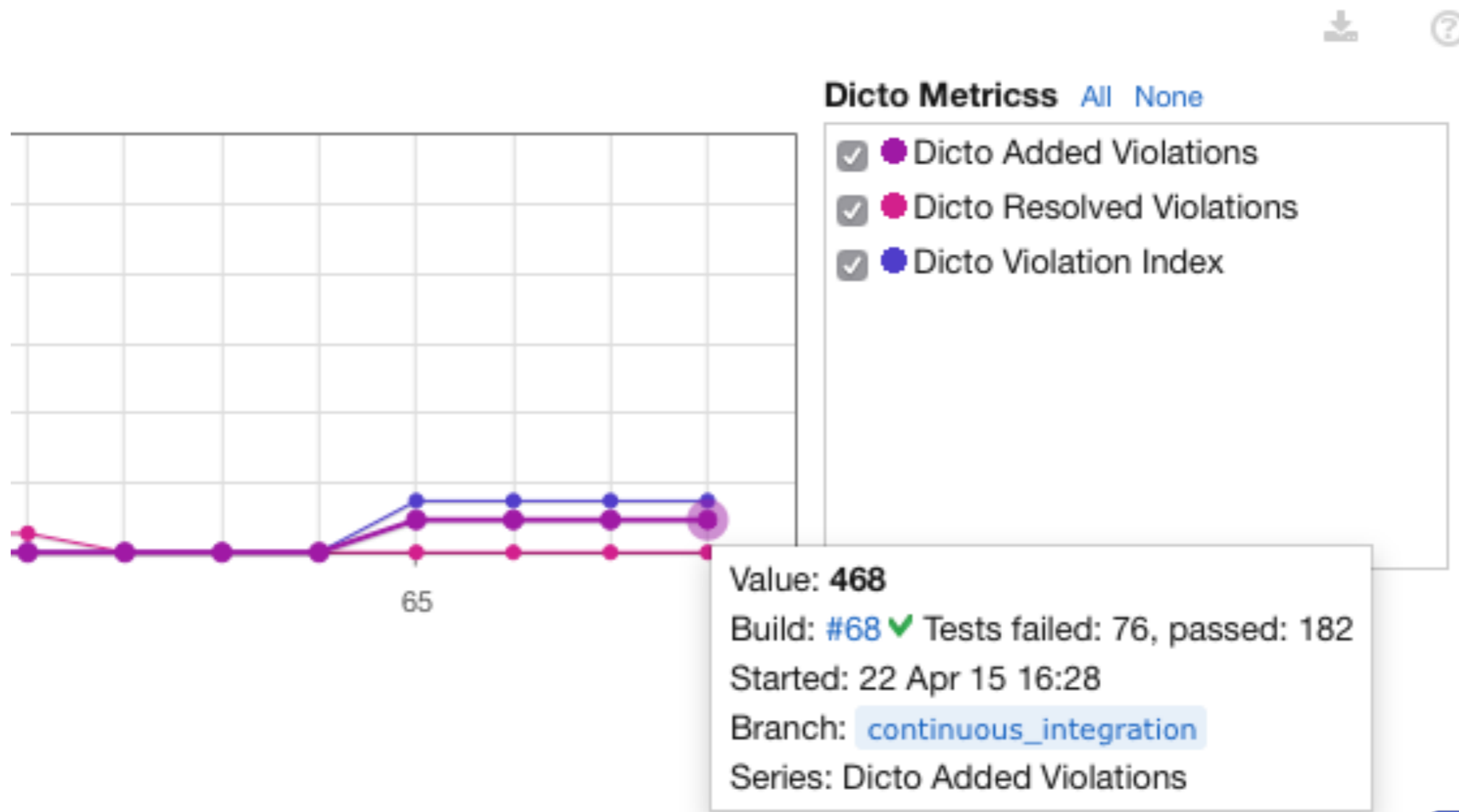
Exception: Currently if you want to output json you most likely have to use exit() at the moment.

Added Violations	1
Resolved Violations	0
All Violations	228
Search...	<input type="text"/>

**Newly Introduced Violations**

ilFileDelivery depends on exit/die





# New Issue



## Issues

New Search

Project: All Severity: All Status: All Assignee: All Resolution: Unresolved + More Criteria

Ordered by Update Date ▾

Found: 8

Major  Open

14 minutes

only Application can depend on Util

Simple Dicto project  
Simple Dicto project

Major  Open

13 minutes

Test cannot depend on Application

Simple Dicto project  
Simple Dicto project

Major  Open

13 minutes

Application can only depend on Test

Simple Dicto project  
Simple Dicto project

Minor  Open

17 minutes

Move this trailing comment on the previous empty line.

Simple Dicto project  
src/Helloworld.java

Critical  Open

17 minutes

Remove this exit() call or ensure it is really required.

[Simple Dicto project](#)

10

[Simple Dicto project](#)

Lines of code

»

only Application can depend on Util

Open

[Rule](#) [Changelog](#)

### only Application can depend on Util

Rule evaluated on: 2015-02-24 10:05:01 CET

Failing constraints:

- only Application can depend on Util
- *cause*: org.jhotdraw.util.collections.jdk11 dependOn org.jhotdraw.util = True
- *cause*: org.jhotdraw.test.util dependOn org.jhotdraw.util = True
- *cause*: org.jhotdraw.contrib.html dependOn org.jhotdraw.util = True
- *cause*: org.jhotdraw.test.util.collections.jdk11 dependOn org.jhotdraw.util = True
- *cause*: org.jhotdraw.contrib.dnd dependOn org.jhotdraw.util = True
- *cause*: org.jhotdraw.test.samples.javadraw dependOn org.jhotdraw.util = True
- *cause*: org.jhotdraw.samples.javadraw dependOn org.jhotdraw.util = True
- *cause*: org.jhotdraw.applet dependOn org.jhotdraw.util = True
- *cause*: org.jhotdraw.test.contrib dependOn org.jhotdraw.util = True
- *cause*: org.jhotdraw.figures dependOn org.jhotdraw.util = True
- *cause*: org.jhotdraw.samples.pert dependOn org.jhotdraw.util = True
- *cause*: org.jhotdraw.framework dependOn org.jhotdraw.util = True
- *cause*: org.jhotdraw.application dependOn org.jhotdraw.util = True



# Evaluation



## **Open source organization**

PHP (1.8M LOC)

12 service providers, 900'000+ users



## **Transportation company**

Java EE

1'000+ employees

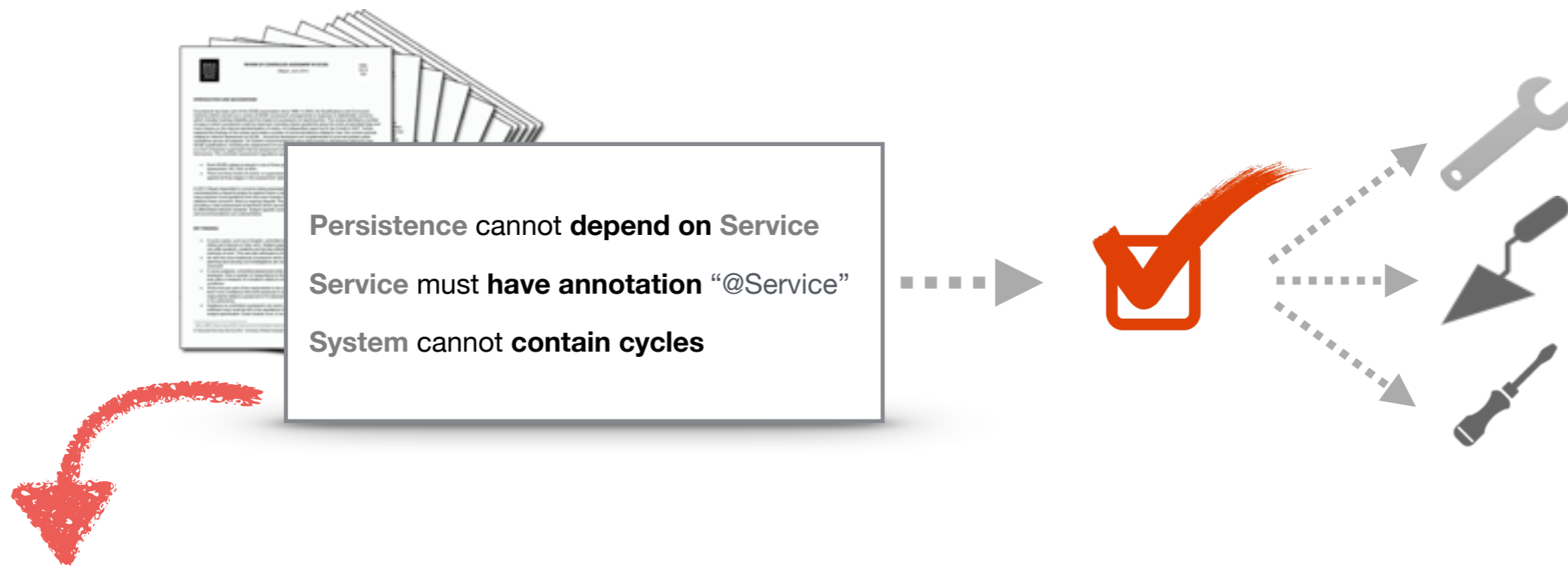


## **Consulting company**

Java EE / .NET

1'000+ employees

# Summary



- **Enforce guidelines**
- **Check NFRs**
- **Readable & executable specification**